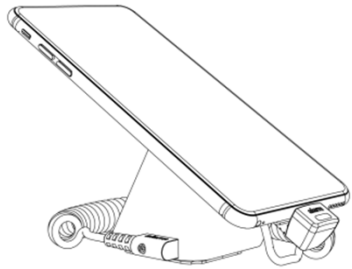




**MAX800**  
**MAX801/MAX802/MAX805/MAX810/MAX815**  
User Manual



Read entire instruction guide before starting installation.

**System Overview**

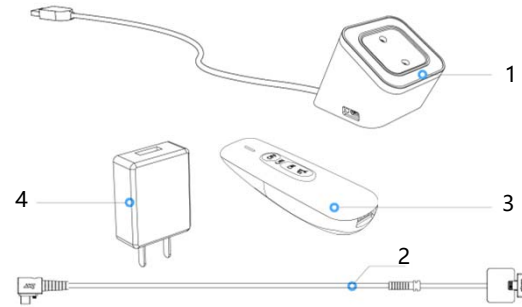
The phone security solution of MAX is well designed based on classical standalone display solutions. It adopts the most advanced technology and has reliable standard security. All its highlights create a wonderful consumer experience, increase sales and prevent theft.

**Status**

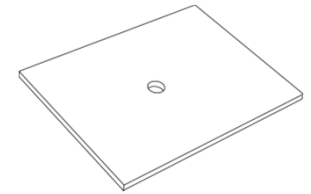
1. System will be activate when connect to power source.
2. Turn off system: remove power supply and merchandise, disarm alarm by remote.
3. LED indicator: "Blue" is "on-guard" , "Red" is "alarming"

**System Components**

1. Stand with Power Cord
2. Charging Cable
3. Remote Control (optional)
4. Adapter (5.5V, 2A)

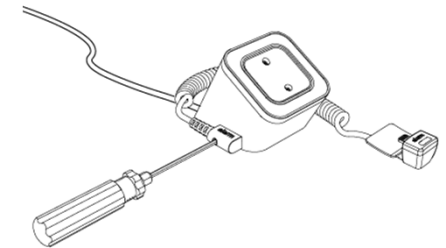


**INSTALLATION STEPS**



①

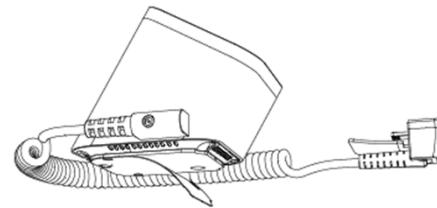
Drill a 20mm diameter hole in display counter (optional) and wipe it clean.



②

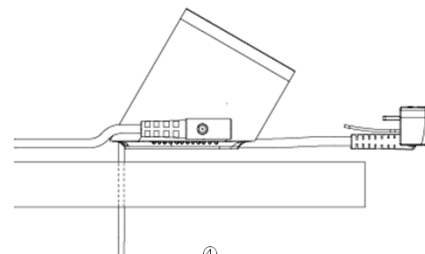
Plug micro-USB connector of charging cable into alarming base port, tighten screws.

**INSTALLATION STEPS**



③

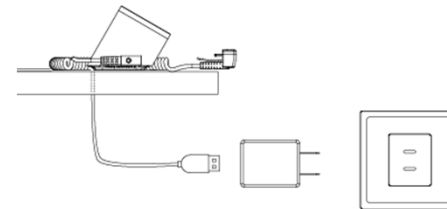
Remove clear film off 3M adhesive on alarming base.



④

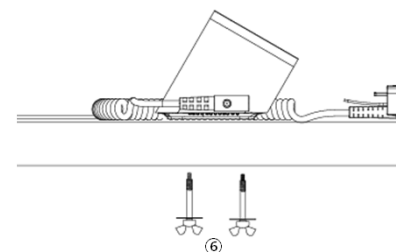
Slide power cable through display counter (optional). Press the security stand firmly for at least 10 seconds.

**INSTALLATION STEPS**



⑤

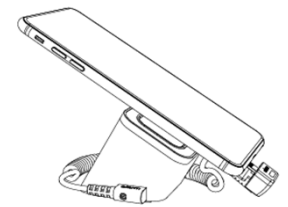
Plug adapter into power cable and outlet.



⑥

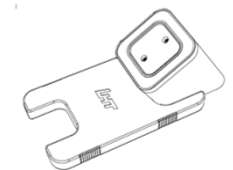
(Optional) Tighten wingnuts below counter.

**INSTALLATION STEPS**



⑦

Plug the other connector of charging and alarming cable into merchandise and remove the clear film off silicone rubber. Installation finished.



⑧

(Optional) Plug the gap of 3M adhesive remover into security base / bracket holder and turn 90° to remove 3M adhesive.

Hangzhou Langhong Technology Co., Ltd.

Service hotline: 400-007-0201

Email : intlservice@hzlanghong.com

Website: <http://www.showhiglobal.com>

Address: 19F of CHNT, Building 1, No. 560, Yueming RD,  
Binjiang District, Hangzhou, Zhejiang, China 310052